

Board rated for
40 A peak current
10 A RMS/OUTx at 25°C

J21

GND

MD041A

J8

nSLEEP
ENABLE/IN1
DIR/IN2
STEP/IN3/RSVD
SCLK/M1/IN4/RSVD
SDI/DECAY0/EN1/DECAY
SDO/DECAY1/EN2/RSVD
RSVD/TOFF/EN3

J4

M01/SCS/
VREF1/EN4
MODE2/IPROP14
RSVD/IPROP13/
IPROP12/IPROP1
RSVD/IPROP12/
IPROP11/IPROP1
RSVD/IPROP11
MODE/MODE1
nHOME/OGPM
nFAULT
nFAULT

C2000 connector
LAUNCHXL-F280025C

TEXAS
INSTRUMENTS

CAUTION READ USER GUIDE BEFORE USE

VIN
4.5V - 65V

GND

J12

MD1 CAUTION - HEATSINK CAN BE HOT

CAUTION HOT SURFACE

LED	DRV84x2	DRV82x2	DRV89x2
D5	MCU_STATUS	MCU_STATUS	MCU_STATUS
D8	GUI_STATUS	GUI_STATUS	GUI_STATUS
D9	DRV_ENABLE	SINGLE	EN1
D10	ACCEL/DECEL	DUAL	EN2
D11	INDEXER HOWE	NA	EN3
D12	NA	NA	EN4

TP46

GND

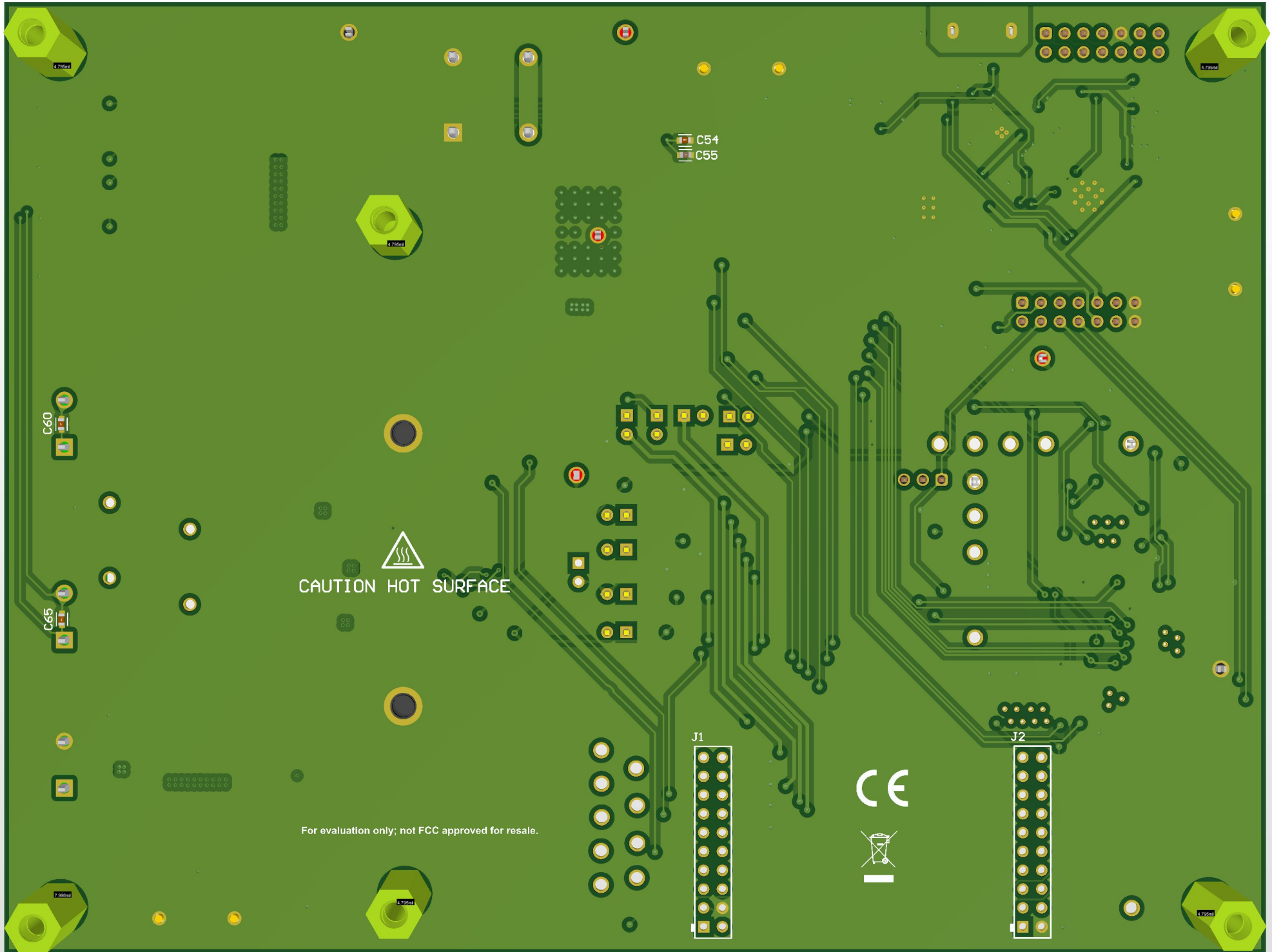
GND

TP44
TP45
TP42
TP43
TP40
TP41
TP38
TP39
TP37

J3

GND

VIN



CAUTION HOT SURFACE

For evaluation only; not FCC approved for resale.

CE

